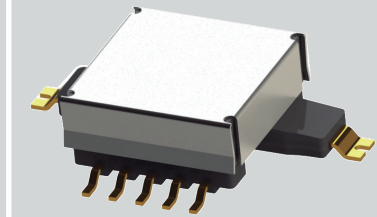


CS-35A

Automotive EV/HEV Isolated SMD Current Transformer up to 35Amps

INDUCTIVE COMPONENTS / CURRENT TRANSFORMERS



APPLICATIONS

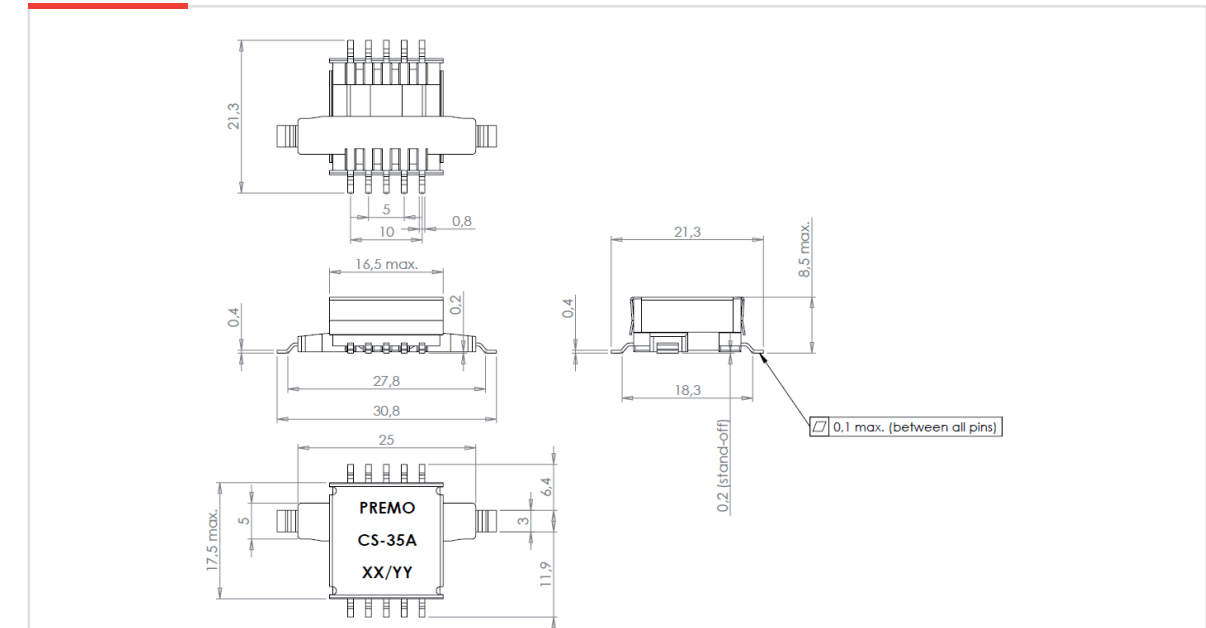
- › Peak current sensing, current measurement for bridge control
- › Automotive EV/HEV DC/DC converters and battery chargers
- › Industrial high power SMPS

01 FEATURES

- › Design for high performance 2-3kW SMPS
- › Height : 8.5mm MAX, Pick & Place compatible
- › Footprint : SMD 31 x 25.5mm MAX
- › RMS current rating : up to 35A
- › 1:100 turn ratio for 5-10Ω burden resistor
- › Working frequency from 50 to 250kHz
- › 3kV isolation between primary and secondary
- › Creepage distance > 5mm
- › High operating temperature range -40 to +155°C
- › AOI (Automatic Optical Inspection) component
- › UL94V-0 and RoHS material
- › Design compliant with AEC-Q200 requirements
- › No thermal aging effect
- › Weight : approx. 5g

02 SPECIFICATIONS

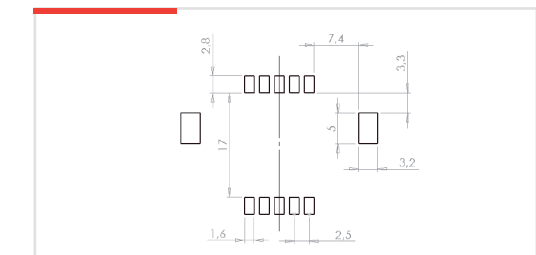
DIMENSIONS (mm)



ELECTRICAL SPECIFICATIONS

Primary Current (Arms)	35
Secondary Turns	100
Secondary Inductance mH (Min)	5
Secondary DCR MAX (Ω)	1.6
Primary DCR MAX (mΩ)	1
Primary to Secondary Isolation (kVac)	3

RECOMMENDED PAD-LAYOUT



- › (1) All test data are referenced to 25°C ambient temperature
- › (2) The inductance value is measured at 100kHz/0.1Vac
- › (3) The isolation is tested at 50Hz/2sec (1min for qualification)
- › (4) The creepage distance is guaranteed > 5mm
- › (5) Continuous operating temperature range must be within -40/+155°C (including self-heating of the part)
- › (6) A burden resistor value from 5 to 10Ω is recommended
- › (7) The amplitude error is estimated better than +/-2.5% on the 50-250kHz and -40/+155°C range (Rb = 5 to 10Ω)